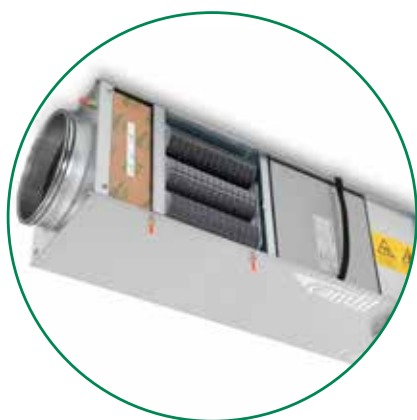


CC 300 Concealed

Built-in air purifier for all types of indoor environments.



UPGRADE FOR SMELLS REMOVAL (VOC), AND 97MM ECOPLEAT.
Art. number: 94000012



Air Cleaner CC 300 Concealed
Art. number: 94000011

EXAMPLE OF A CC 300 CONCEALED BEHIND FALSE CEILING



Upgrades / Accessories / Exchange

UPGRADES

- Art. no. 94000012 - Upgrade with CamCarb CG 600 for VOC, and 97mm Ecopleat
- Art. no. 94000013 - Upgrade with CamCarb CG 600 for formaldehyde removal, and 97mm Ecopleat
- Art. no. 94020057 - Upgrade with CamCarb CG 600 for decontamination, and 97mm Ecopleat
- Art. no. 94000014 - Upgrade to H13

ACCESSORIES

- Art. no. 94000015 - UK plug 230V, UK 50Hz

EXCHANGE - PRE-FILTER

- Art. no. 94020023 - HI-FLO XLT 7 287x287x370-5-25, filter class F7, 1 pc per unit, standard
- Art. no. 94020027 - 3GPA 287x287x97-M5, filter class M5, 1 pc per unit

EXCHANGE - HIGH EFFICIENCY

- Art. no. 94020022 - CET11-287x287x292-01, filter class E11, 1 pc per unit, standard
- Art. no. 94020024 - DE13-287x287x292-PR, filter class H13, 1 pc per unit

EXCHANGE - MOLECULAR

- Art. no. 94020046 - CamCarb CG 600 VOC, 9 pc per unit
- Art. no. 94020049 - CamCarb CG 600 formaldehyde, 9 pc per unit
- Art. no. 94020052 - CamCarb CG 600 decontamination, 9 pc per unit

Operating specifications

Setting	Air flow m ³ /h	Noise level dBa	System efficiency based on H13
1	83	23,5	>99 %
2	135	28,8	>99 %
3	250	43,3	>99 %
4	362	53,9	>99 %
5	466	60,7	>99 %
6	471	61,3	>99 %

CC 800

Air purifier for hospitals, offices, homes, schools, public spaces.

**MOLECULAR BOX WITH 3 PCS
CAMCARB CG 2600, VOC,
1 BOX PER UNIT**
Art. number: 94000024



Air Cleaner CC 800
Art. number: 94000022

**SUCTION SIDE (OUTDOOR
CONNECTION), 1 PC PER UNIT**
Art. number: 94000025



WHEEL PLATE, 2 PCS PER UNIT
Art. number: 94000034



Upgrades/Accessories/Exchange

UPGRADES

- Art. no. 94000023 - HEPA 13 (Includes 2 pcs H13 filter)

ACCESSORIES

- Art. no. 94000015 - UK plug 230V, UK 50Hz
- Art. no. 94000032 - Pre-filter mats, 2 pcs per unit

EXCHANGE - HIGH EFFICIENCY

- Art. no. 94020002 - Main filter Micretain MXE 11-252x610x150-00, filter class E11, 2 pcs per unit, standard
- Art. no. 94020003 - Main filter Absolute MGE 13-252X610X150-00, filter class H13, 2 pcs per unit

EXCHANGE - MOLECULAR

- Art. no. 94020048 - CamCarb CG 2600 VOC, 3 pcs per unit
- Art. no. 94020051 - CamCarb CG 2600 formaldehyde, 3 pcs per unit
- Art. no. 94020054 - CamCarb CG 2600 decontamination, 3 pcs per unit

(Other filter classes available on request)

Operating specifications

Setting	Air flow m ³ /h	Energy consumption/W	Noise level dBA	System efficiency based on H13
1	180	5	30	>99 %
2	250	6	33	>99 %
3	300	7	34	>99 %
4	347	8	35	>99 %
5	520	40	46	>99 %
6	720	124	56	>99 %

CC 2000

Mobile/stationary air purifier for dusty indoor premises.

EXTENSION FRAME WITH 1 PC HEPA H13 ON SUPPLY SIDE

Art. number: 94000020



Air Cleaner CC 2000 Handle + Basic

Art. number: 94000018

Art. number: 94000019

MOLECULAR BOX WITH 6 PCS CAMCARB CG 2600 VOC, 1 BOX PER UNIT

Art. number: 94000021



CC 2000 STANDARD AND SUCTION SIDE

Art. number: 94000018 & 94000029

Upgrades/Accessories/Exchange

UPGRADES

- Art. no. 94000028 - HEPA 13 (Includes 2 pcs H13 filter)

ACCESSORIES

- Art. no. 94000032 - Suction side, 2 pcs per unit
- Art. no. 94000015 - UK plug 230V, UK 50Hz
- Art. no. 94000031 - Pre-filter, 2 pcs per unit
- Art. no. 94000034 - Wheel plate, 2 pcs per unit

EXCHANGE - PRE-FILTER

- Art. no. 94020007 - Pre-filter 3GPA (753x250x90-F7), filter class F7, 2 pcs per unit, standard

EXCHANGE - HIGH EFFICIENCY

- Art. no. 94020006 - Main filter Micretain MGE11 (250x750x150-0), filter class E11, 2 pcs per unit, standard
- Art. no. 94020008 - Main filter Absolute MGE13 (250x750x150-0), filter class H13, 2 pcs per unit
- Art. no. 94020009 - Absolute MXE13 for extension frame on supply side 390x750x250, filter class H13, 1 pc per unit

EXCHANGE - MOLECULAR

- Art. no. 94020048 - CamCarb CG 2600 VOC, 6 pcs per unit
- Art. no. 94020051 - CamCarb CG 2600 formaldehyde, 6 pcs per unit
- Art. no. 94020054 - CamCarb CG 2600 decontamination, 6 pcs per unit

(Other filter classes available on request)



Operating specifications

Air flow m ³ /h	Energy consumption/W	Noise level dBA	System efficiency based on H13
0-1400	0-302	0-68	>99 %

CC 1700 & CC 2500

Versatile air cleaner specially engineered to provide clean indoor air. Especially suitable for these professional segments: Corrosion control, healthcare, comfort, life science, food & beverage.



Air Cleaner CC 1700 & CC 2500
Art. number: 94000085 & 94000086

Upgrades/Accessories/Exchange

OIL & GAS, METAL, PULP AND PAPER (CC 1700) FOR CORROSION CONTROL

- Art. no. 94020065 - Inlet, filter class G4, target containment: PM10, 1 pc per unit
- Art. no. 94020068 - CC CG MS, target containment: Acids, H₂S, SO₂, 15 pcs per unit
- Art. no. 94020074 - CC CG MCI, target containment: Inorganic & organic acids, ozone, 15 pcs per unit
- Art. no. 94020067 - Outlet, filter class E11, target containment: PM2.5, PM1, nanoparticles, 1 pc per unit

DATA CENTERS (CC 1700)

- Art. no. 94020066 - Inlet, filter class F7, target containment: PM10, PM2.5, PM1, 1 pc per unit
- Art. no. 94020063 - GigaPleat NXPC MA, target containment: Acids, H₂S, SO₂, ozone, 1 pc per unit
- Art. no. 94020067 - Outlet, filter class E11, target containment: PM1, nanoparticles, 1 pc per unit
- Art. no. 94020064 - Outlet, filter class H13, target containment: PM1, nanoparticles, 1 pc per unit (upgrade from E11)

COMFORT (CC 1700) FORMALDEHYDE

- Art. no. 94020066 - Inlet, filter class F7, target containment: PM10, PM2.5, PM1, 1 pc per unit
- Art. no. 94020075 - CC CG formaldehyde, target containment: Formaldehyde, aldehydes, 15 pcs per unit
- Art. no. 94020062 - CitySorb VOC, target containment: VOC, smells, 1 pc per unit
- Art. no. 94020021 - CC CG VOC, target containment: VOC, smells, 15 pcs per unit (upgrade from CitySorb)
- Art. no. 94020067 - Outlet, filter class E11, target containment: PM1, nanoparticles, 1 pc per unit

COMFORT (CC 2500)

- Art. no. 94020065 - Inlet, filter class G4, target containment: PM10, 1 pc per unit
- Art. no. 94020061 - CityCarb, target containment: PM2.5, PM1, VOC, smells, 1 pc per unit
- Art. no. 94020060 - Outlet, filter class E11, target containment: PM1, nanoparticles, 1 pc per unit
- Art. no. 94020064 - Outlet, filter class H13, target containment: PM1, nanoparticles, 1 pc per unit (upgrade from E11)

CC 6000

Air Cleaner CC 6000 is engineered to help large logistic and manufacturing companies keep employees healthy, improve product quality and reduce dust.



**Air Cleaner CC 6000
Vertical**
Art. number: 94000001 /
94000002



**Air Cleaner CC 6000
Horizontal**
Art. number: 94000003 /
94000004



**Air Cleaner CC 6000
Prosafe**
Art. number: 94020005

Accessories/Exchange

ACCESSORIES

- Art. no. 94000007 - Constant airflow sensor, 1 pc per unit
- Art. no. 94000015 - UK Plug (1 phase), 1 pc per unit
- Art. no. 94000016 - UK Plug (3 phase)
- Art. no. 94000026 - Extension frame kit 97mm incl. 2 frames (without filter), 2 pcs per unit
- Art. no. 94000027 - Extension frame bag filter incl. 2 frames (without filter), 2 pcs per unit

EXCHANGE - PRE-FILTER

- Art. no. 94020013 - 3GPA-F7-610x610x48, filter class F7, 4 pcs per unit, standard (1)
- Art. no. 94020016 - Bagfilter XLT F7 592x592x370, filter class F7, 4 pcs per unit
- Art. no. 94020015 - 3GPA-F7-610x610x96, filter class F7, 4 pcs per unit
- Art. no. 94020058 - Aluminium pre-filter with flange 588x1198x50, 2 pcs per unit

EXCHANGE - COMBINATIONS FILTER

- Art. no. 94020018 - CityCarb CIZP-7I 592x592x292, filter class F7, 4 pcs per unit
- Art. no. 94020017 - CityFlo HFZS-F7 592x592x380, filter class F7, 4 pcs per unit

EXCHANGE - HIGH EFFICIENCY

- Art. no. 94020012 - MGE11-1220x610x100, filter class E11, 2 pcs per unit, standard (2)
- Art. no. 94020039 - MGE13-1220x610x100, filter class H13, 2 pcs per unit

EXCHANGE - HIGH MOLECULAR

- Art. no. 94020047 - CamCarb CG 1300 VOC, 2x32 pcs per unit
- Art. no. 94020050 - CamCarb CG 1300 formaldehyde, 2x32 pcs per unit
- Art. no. 94020053 - CamCarb CG 1300 decontamination, 2x32 pcs per unit

EXCHANGE - PROSAFE FILTER

- Art. no. 94020011 - Prosafe pre-filter 610x610x48, filter class F7, 4 pcs per unit
- Art. no. 94020030 - Prosafe 610x1220x100, filter class H14, 2 pcs per unit



1

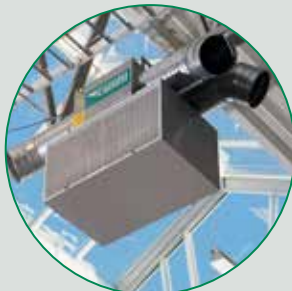


2

CC 6000 (continued)



SILENCER (ONLY FOR VERTICAL MODEL), 1-2 PCS PER UNIT
Art. number: 9400005



EYELETS FOR CEILING MOUNTING (HORIZONTAL), 4 PCS PER UNIT
Art. number: 9400006



EXT. FRAME FOR BAGFILTER/ CITYCARB/CITY-FLO 592X592X MAX 370 (WITHOUT FILTER)
Art. number: 9400010



UPGRADE PRE-FILTER TO 97MM ECOPLEAT
Art. number: 9400008



MOLECULAR BOX FOR 2X32 PCS CAMCARB CG 1300 INCL. 2 FRAMES (WITHOUT FILTER), 2 PCS PER UNIT
Art. number: 9400035



UPGRADE MAIN FILTER TO HEPA 13
Art. number: 9400009

Air flow m ³ /h	Energy consumption/W	W/(m ³ /h)	dBA without silencer	dBA with silencer	Working area m ²	System efficiency based on H13
3000	150W	0,05	52	50	750	>99 %
4000	312W	0,08	56	53	1000	>99 %
5000	556W	0,11	62	57	1250	>99 %
6000	887W	0,15	67	64	1500	>99 %